

Impact Report



Flood Anticipatory Action (AA) Response for Yola, Adamawa State: Rapid Response Mechanism (RRM) for Flash Flood Emergency and WASH Interventions.

8th to 30th September 2025

Humanitarian Context

Communities in Northeast Nigeria continue to face severe challenges from flooding, unsafe water, and malnutrition, disproportionately affecting women and children. At LPF, we are addressing these gaps through integrated, community-driven WASH interventions, aligned with UNICEF and United Nations Office for the Coordination of Humanitarian Affairs frameworks.

By promoting safe water access, hygiene practices, and community engagement, we are reducing health risks and strengthening local resilience. Our work ensures that communities are not just supported, but empowered to lead sustainable change

Background

The recent heavy rainfall in Adamawa State has resulted in severe flash flooding impacting numerous communities across Yola South, Yola North, and Fufore LGAs. Over 550 households (approximately 5,560 residents) have been displaced. Flooding has destroyed homes and infrastructure, placing an estimated 15,000 individuals at heightened risk, particularly women and children who make up 69% of the affected population.

Water quality assessments indicate that 55% of water sources are contaminated, increasing the risk of waterborne diseases. In response, UNICEF, in partnership with the Lindii Peace Foundation (LPF), activated an anticipatory action plan to deliver lifesaving WASH and Nutrition interventions.

Impact Snapshot

97,662

People with access water through chlorination of boreholds.

64,297

Community engagement and awareness campaigns.

476,941

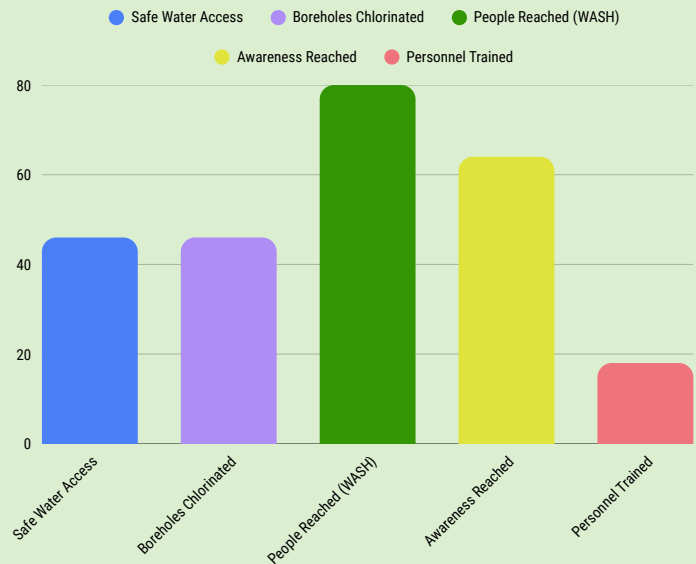
Flood awareness messages on Radio and Television.





Implementation Progress (Achievements vs Gaps)

The response by Lindii Peace Foundation (LPF), in partnership with UNICEF and aligned with sector coordination frameworks led by United Nations Office for the Coordination of Humanitarian Affairs, reflects a strong commitment to delivering timely, life-saving WASH interventions in flood-affected communities across Adamawa State. LPF's core goals, to ensure equitable access to safe water, promote improved hygiene practices, strengthen community resilience, and protect vulnerable populations, are clearly demonstrated through both the scale and quality of interventions implemented.

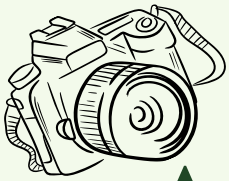


Identified Gaps

- Limited coverage of safe water interventions compared to growing needs.
- Insufficient number of trained personnel for expanding response areas.
- Need for increased RCCE activities in hard-to-reach communities.
- Additional resources required for sustained chlorination and water monitoring.
- Scaling up hygiene kits and sanitation support remains critical.

Key Achievements

- Reached 97,662 people with access to safe water through chlorination of boreholes.
- Conducted daily chlorination of 20 boreholes with FRC monitoring.
- Shock chlorinated 92 boreholes across flood-prone communities.
- Trained 158 personnel, including hygiene promoters and water chlorinators on flood AA and crosscutting issues (PSEA, GBV, VAC).
- Reached 64,297 individuals through community engagement and awareness campaigns.
- Broadcast hygiene and flood awareness messages on radio and television, reaching 476,941 people.
- Conducted environmental disinfection and hotspot mapping.
- Established complaint response mechanisms and community feedback desks.



ACTIVITY PHOTOS





Recommendation

For future flood response interventions, it is recommended that relief assistance be channelled directly through implementing partners to promote a coordinated, efficient, and harmonized “one humanitarian, one response” approach in alignment with the United Nations Office for the Coordination of Humanitarian Affairs Humanitarian Response Plan. This will help manage community expectations, minimize dependency, and strengthen community ownership and participation in resilience-building activities.

Furthermore, response strategies should incorporate context-appropriate and safe access modalities, including the use of boats equipped with life-saving gear, to ensure timely delivery of assistance to hard-to-reach and flood-isolated communities cut off from accessible highland areas.

We couldn't have done it without your generous support.

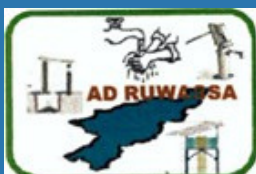


We also extend our sincere appreciation to our dedicated field teams, community volunteers, partners, and frontline responders whose tireless efforts continue to make this impact possible.



Thank you to all our donors and partners.

 **Toll Free Line:**
080 000 LPF LINE
(0800 005 735 463)



 infor@lindiipeacefoundation.org

 www.lindiipeacefoundation.org

Address I: No. 1 Waziri Kolo Crescent, By Nursing Home, Off Damboa Road, Old GRA Maiduguri, Borno State

 Address II: No. 1 Sugun Mai Mele Close, Off Mustapha Goni Street, New GRA Maiduguri, Borno State.

B2 PTF Estate, 29 Cairo Street, Off Ademola Adetokunbo Crescent, Wuse II, Abuja FCT.